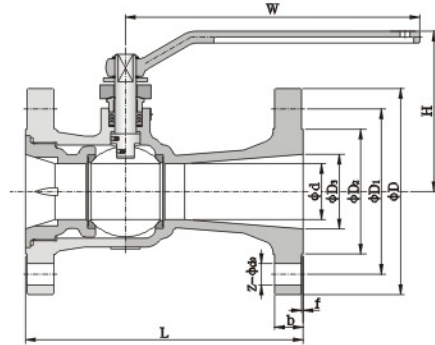
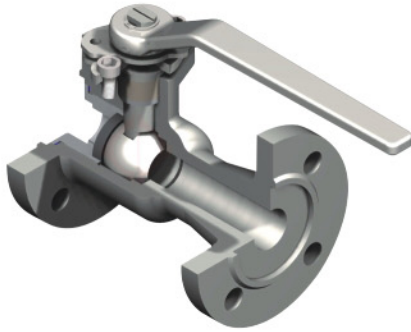


One Piece Body Ball Valve

Main Size And Weight



Pressure rating	Size		Dimensions(mm)											Weight (kg)
	DN	NPS	L	d	D	D ₁	D ₂	D ₃	b	F	Z-φd _o	W	H	
Class150 PN20	40	1 1/2	165	28	127	98.5	73	38	14.5	1.6	4-15	150	100	6
	50	2	178	38	152	120.5	92	51	16	1.6	4-19	200	132	8
	65	2 1/2	190	50	178	139.5	105	64	17.5	1.6	4-19	250	142	12
	80	3	203	57	190	152.5	127	76	19.5	1.6	4-19	300	163	15
	100	4	229	76	229	190.5	157	102	24	1.6	8-19	350	178	29
	150	6	394	102	279	241.5	216	152	25.5	1.6	8-22	500	230	54
Class300 PN50	40	1 1/2	190	28	156	114.5	73	38	21	1.6	4-22	150	100	9
	50	2	216	38	165	127	92	51	22.5	1.6	8-19	200	132	11
	65	2 1/2	241	50	190	149	105	64	25.5	1.6	8-22	250	142	15
	80	3	283	57	210	168.5	127	76	29	1.6	8-22	300	164	22
	100	4	305	76	254	200	157	102	32	1.6	8-22	350	183	40
	150	6	403	102	318	270	216	152	37	1.6	12-22	500	230	81

Pressure rating	DN	40	50	65	80	100	150	
PN16	Dimensions (mm)	L	165	178	190	203	229	394
		H	100	132	142	163	178	230
		W	150	200	250	300	350	500
	Weight(kg)	7	9	12	16	28	53	
PN25	Dimensions (mm)	L	165	178	190	203	229	394
		H	100	132	142	163	178	230
		W	150	200	250	300	350	500
	Weight(kg)	7	10	13	17	30	56	
PN40	Dimensions (mm)	L	190	216	241	283	305	403
		H	100	132	142	164	283	230
		W	150	200	250	300	350	500
	Weight(kg)	7	10	13	17	30	56	
JIS 10K	Dimensions (mm)	L	165	178	190	203	229	394
		H	100	132	142	163	178	230
		W	150	200	250	300	350	500
	Weight(kg)	7	9	12	15	27	52	
JIS 20K	Dimensions (mm)	L	190	216	241	283	305	403
		H	100	132	142	164	183	230
		W	150	200	250	300	350	500
	Weight(kg)	8	11	14	20	36	77	